

BASIC TRAINING

Atten-hut! Right face! Forward march! It is time to get those flabby compliance programs into shape. Dust off those storm water sampling kits. Review your BMPs. Get ready, because the rainy season is coming.

Just as basic training for a soldier is a vital part in winning a war, so is annual training equally important for having a successful storm water season. It is important to take time each year to review the permit requirements, the SWPPP commitments, and storm water sampling techniques.

Repetitive training will make the storm water monitoring requirements second nature for you. When a real storm event arrives, you will know exactly what is needed, what forms to fill out, and what sample containers to fill. It will help eliminate confusion and reduce the possibility of making a costly mistake.



Sound off!

One, two,

Sound off!

Three, four,

One, two, three, four

One, two, three, four.

I don't know but, I've been told.

I don't know but, I've been told.

Ya'gotta get two samples a year.

Ya'gotta get two samples a year...

SEPTEMBER'S "TO DO LIST"

- Schedule and perform your annual training.
- Look for illicit discharges and do the 1st Quarter Non-Storm Water Observations (Forms 2 & 3 by September 30th.)
- **Before October 1**, contact your laboratory and order a new sample kit for the upcoming storm season.
- Perform the pre-storm season facility maintenance. Clean out drain inlets and filter bags; sweep paved surfaces; clean up any spills, oil spots, or other contaminants; cover stock piles, bins, and dumpsters; and stabilize any areas prone to erosion.




We Have a Winner

Salvador Peralta submitted the winning answer!

If non-storm water cannot go into a storm drain, where can it be discharged (legally)?

Sal submitted a correct answer, *“Non-storm water can be treated by the carbon filters, tested, and discharged to the County sewer”*. We received a variety of answers to this question, and all of them were correct. There are several ways of dealing with non-storm water discharges which include evaporation, recycling the water into your facility’s processes, treatment and discharge to a sanitary sewer system or under a different NPDES permit. He will receive a **\$25** eGiftCard to

 to buy a training video or something else.

Prepare for the Storm Season

Do your facility storm drains need a good cleaning? Would you like to have drain inlet protection installed to stop sediment, heavy metals, and oil and grease from entering your drains? Do you want to see a reduction in pollutants in your storm water discharge? WGR has added a new tool to its storm water compliance arsenal. We will mobilize our BMP trailer to your location and get your drains in tip top shape. Call Kevin Harcourt to schedule an appointment.

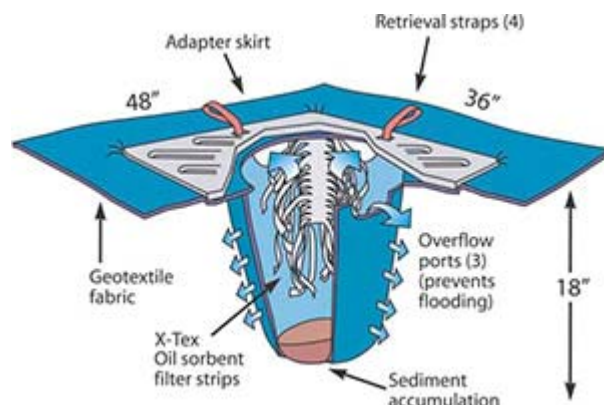
(209) 334-5363 ext. 201



OPERATION BMP

StreamGuard™ Oil, Grease & Sediment Catch Basin Insert

- StreamGuard Catch Basin Inserts are made of geotextile fabric that absorbs oil and grease and retains sediment while allowing water to pass through freely.
- X-Tex filter strips offer total capacity of 1.38 gallons of hydrocarbon removal.
- Catch Basin Insert holds up to 40 lbs. of sediment.
- StreamGuard Catch Basin Insert offers easy installation and removal.
- Priced as low as \$72/unit at www.bmpoutlet.com.
- For more information contact sales@bmpoutlet.com.





Annual Training Requirements

The Industrial General Permit states the following concerning training:

v. Employee Training

This includes training of personnel who are responsible for (1) implementing activities identified in the SWPPP, (2) conducting inspections, sampling, and visual observations, and (3) managing storm water. Training should address topics such as spill response, good housekeeping, and material handling procedures, and actions necessary to implement all BMPs identified in the SWPPP. The SWPPP shall identify periodic dates for such training. Records shall be maintained of all training sessions held.

According to the permit, training must include personnel responsible for implementing activities included in the SWPPP. This would include most staff involved in the physical operations and/or maintenance of the facility. Anyone whose actions might jeopardize storm water quality should be recruited for this training. It also should include anyone who conducts sampling and visual observations and those responsible for managing storm water discharges. Now, many facilities separate the training between operations and those who perform the monitoring. However, we recommend you train as many people as possible to collect samples and do the visual observations. This does a couple of things:



1) It provides you with plenty of back-up samplers, should the regular staff not be available, and 2) we have seen that it creates a greater awareness among the staff to the importance of pollution prevention and how their actions may affect the storm water results of the facility.

Storm Water Training Topics:

- Spill response
- Good housekeeping
- Material handling procedures
- BMPs used at the facility
- Last year's analytical results
- Preparation for the storm season
- Roles and responsibilities of the pollution prevention team
- Monitoring forms
- Sample kit and chain-of-custody
- Storm water discharge procedures

Other Required EH&S Annual Training:

- SPCC training
- Haz. waste training
- UST operator training
- HAZWOPER training for personnel who respond to spills of hazardous materials
- First Aid / CPR (every other year)
- Hearing protection training
- Respiratory protection training
- Confined space entry training
- Hazard Communication training



SEPTEMBER STORM WATER CONTEST

By September 30, submit a response for the following:

How long must storm water training records be maintained?

All persons submitting correct answers will be placed in a drawing. The winner will receive a **\$25** eGiftCard to ...



to go towards a purchase of some hiking boots.

Please submit your entries to jteravskis@wgr-sw.com .

**Need Training? Call WGR's Aaron Ortiz to schedule a training event.
(209) 810-5151**

Please contact us if you have any questions ...

Rain Events Newsletter Editor:

John Teravskis jteravskis@wgr-sw.com
(209) 334-5363 ext. 202

Technical Questions about Storm Water Compliance? Call ...

Aaron Ortiz, aortiz@wgr-sw.com, (209) 810-5151
John Teravskis, jteravskis@wgr-sw.com , (209) 649-0877
Bill Senner, bsenner@wgr-sw.com , (310) 629-5260

Storm Season
Starts October 1